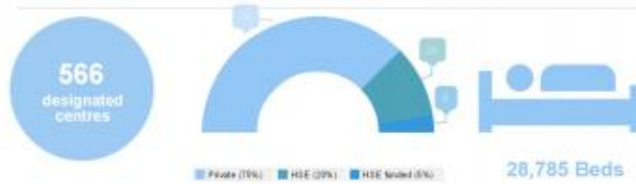
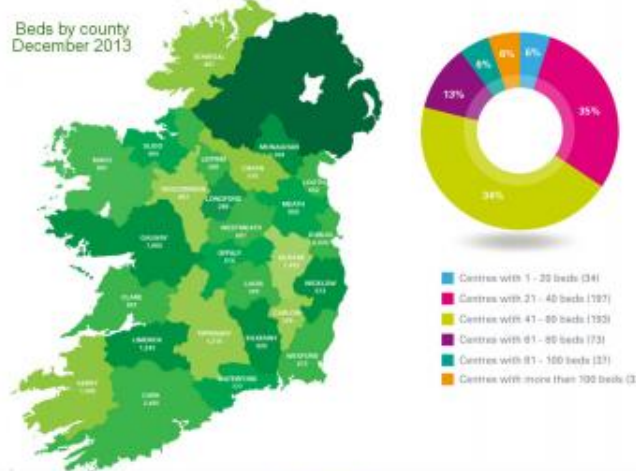


Overview of the Nursing Home Sector in Ireland

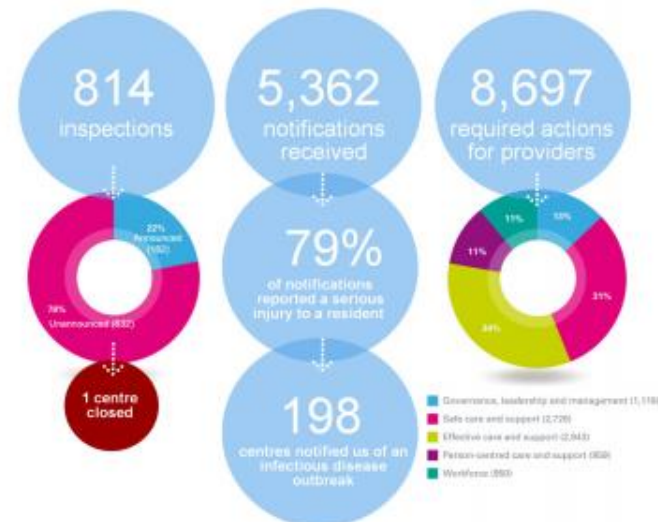


Beds by county December 2013



What we did

The regulation of designated centres for older and dependent persons and the registration and monitoring of the quality and safety of those services aims to provide assurance to individuals and their families.



- Our approach to the regulation of services is constantly evolving to ensure we target our resources at areas of greatest need and highest risk.
- Our processes seek to ensure that the health, wellbeing and quality of life of people in residential care are promoted, protected and improved.
- In 2013 we introduced the concept of thematic inspections (end-of-life care and food and nutrition) to focus attention and drive quality and safety within the sector.
- Responsive regulation ensures that those providers who are persistently non-compliant with the standards and regulations, and who place service users at risk of harm, are identified quickly and face proportionate and meaningful enforcement action.



Next steps

- During 2014 we will extend our programme of thematic inspections of food and nutrition and end-of-life care in an effort to further drive improvements in these areas.
- In line with the outcomes of our inspection programme and any other concerns we received we will ensure that the programme continues to focus on service areas that require improvement in 2014 and 2015.
- 2014 will also see the introduction of new care and welfare regulations for centres, and, at the same time, revised standards are also being produced by the Authority.
- All of this activity, along with a commitment to continued improvements in our regulatory approaches, affirms our commitment to ensure that the rights and experiences of older persons in residential care are protected and improved.



Read the full report on www.hiqa.ie/publications

Read the individual inspection reports
<http://www.hiqa.ie/social-care/find-a-centre/nursing-homes>