



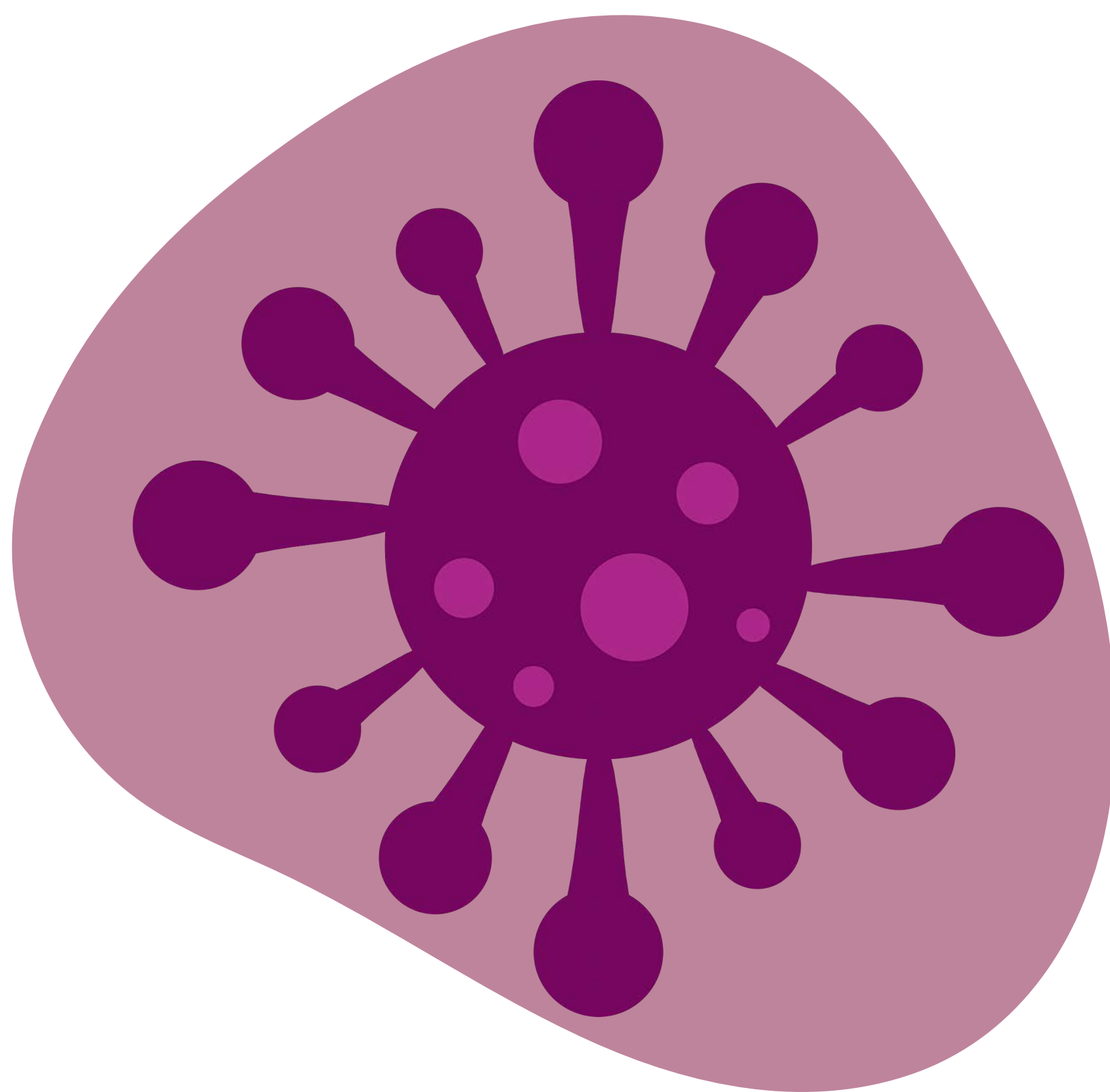
**Health
Information
and Quality
Authority**

An tÚdarás Um Fhaisnéis
agus Cáilíocht Sláinte



A ROUND UP OF OUR
**REPORTS,
REVIEWS AND
ADVICE**

Submitted to support the National Public Health
Emergency Team to inform its work in May 2021





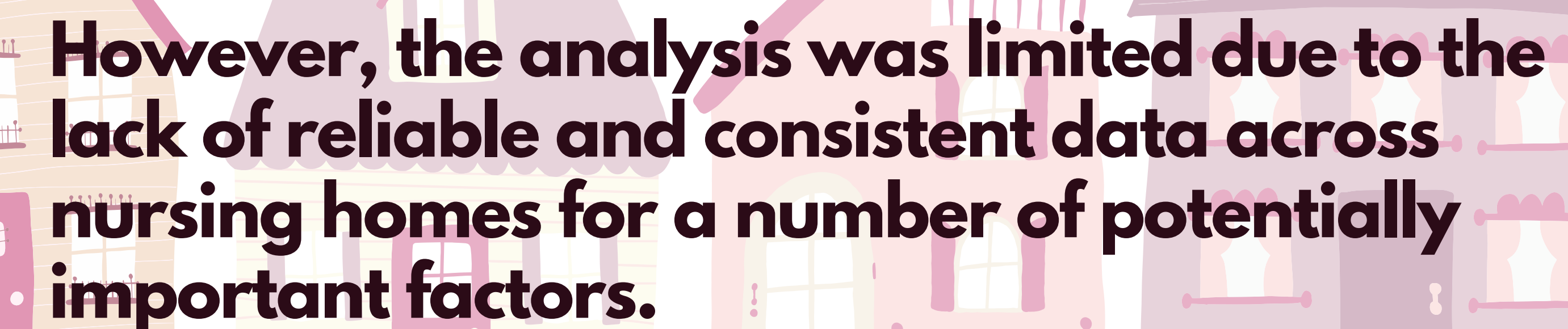
COVID-19 outbreaks in Nursing Homes

In a joint analysis with the Health Protection Surveillance Centre, we reviewed factors associated with outbreaks of SARS-CoV-2 in nursing homes in Ireland.

The analysis examined HIQA registered nursing homes and covered the period prior to the rollout of the COVID-19 vaccination programme.

Many of the factors we identified were outside the control of the nursing homes...

the probability of an outbreak occurring in a nursing home increased with rising community incidence around the home, the number of beds within the home and the presence of other nursing homes in close proximity.



However, the analysis was limited due to the lack of reliable and consistent data across nursing homes for a number of potentially important factors.

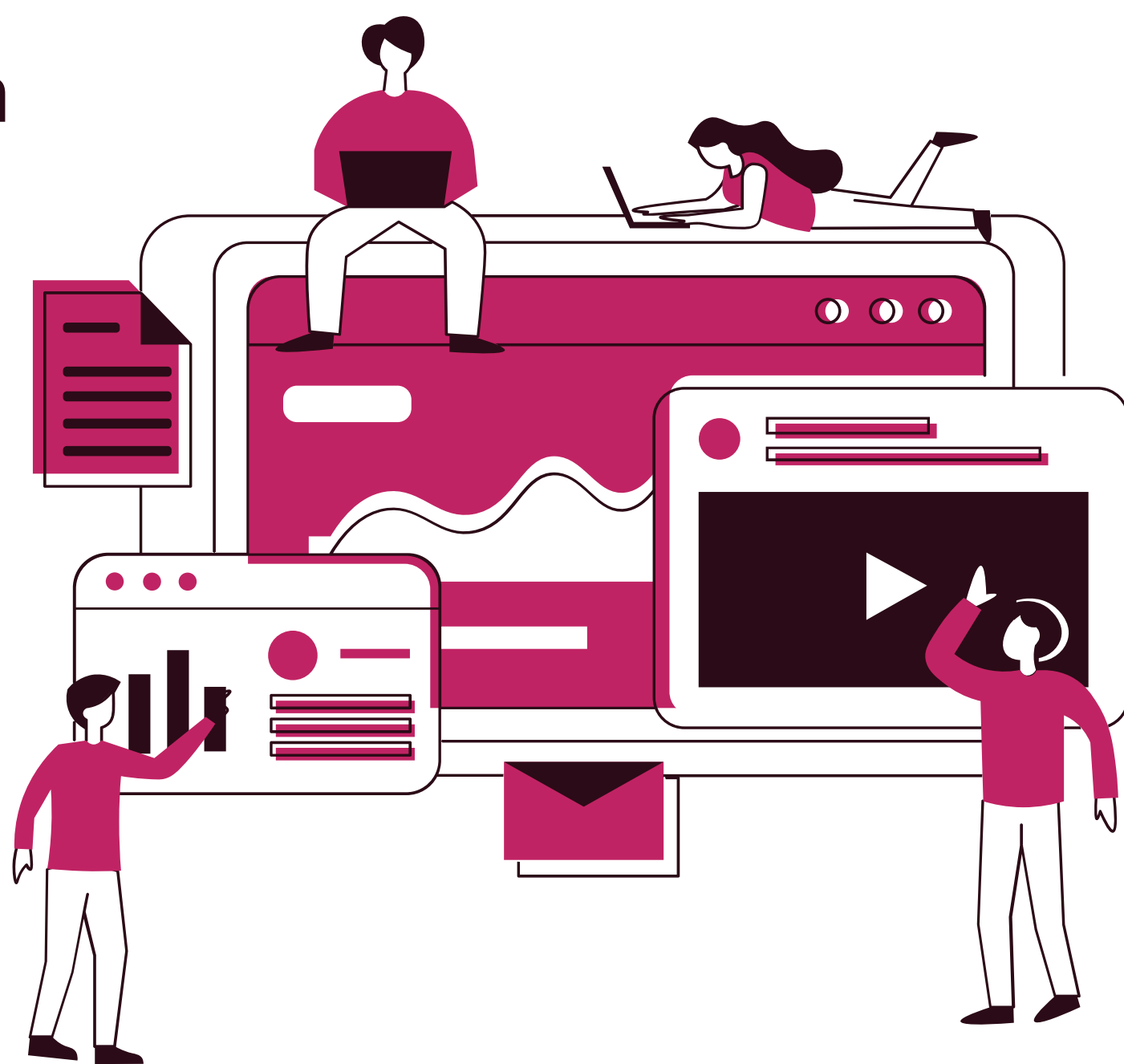


DATA COVID-19 DATABASE

Once a week we update our database of public health guidance on COVID-19 to include latest guidance from governments, public health organisations and NGOs.

The database is mostly used by relevant stakeholders in the Health Protection Surveillance Centre, the National Public Health Emergency Team, the Department of Health, and Health Service Executive.

However, it is accessible and available on our website for everyone and if you are interested in finding out more about how other countries are reacting to COVID-19, we encourage you to use it.



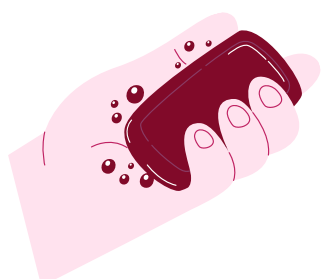
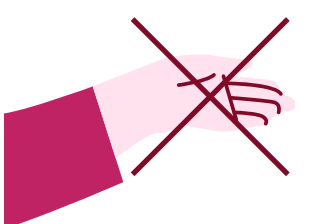


PROTECTIVE MEASURES FOR VULNERABLE GROUPS

We updated our review of public health guidance issued to protect vulnerable groups who may be at risk of severe COVID-19 twice in May.

Our review summarises the variety of protective measures being taken to protect vulnerable groups who are at high risk of severe illness from COVID-19 across 14 countries.

Advice for vulnerable groups typically includes stay at home, practice hand hygiene, physical distancing and avoid contact with others.



Our latest report included a change of high risk grouping definitions from Norway and the United States of America. It also included updated advice from Norway, Sweden, Scotland and the United States of America.

We have updated this report

48
times



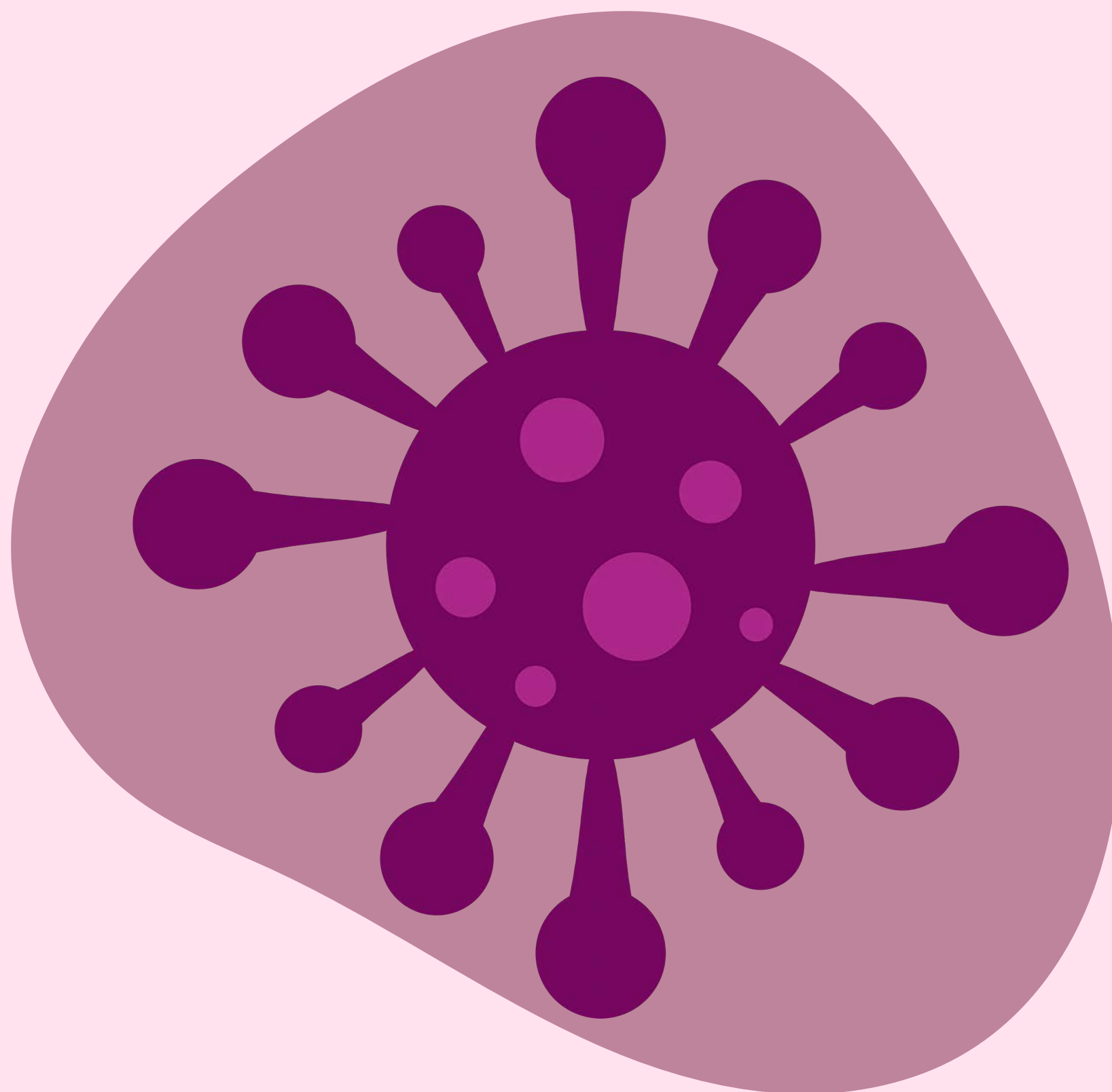
Guidance for residential care facilities

We updated our rapid review of guidance for residential care facilities in the context of COVID-19 once in May.

Our latest report included a summary of updated guidance for residents in residential care settings in a number of countries.

Residential care facilities (RCFs) in Ireland and across the world have been affected by outbreaks of COVID-19. Our rapid review summarises the guidance issued by national and international agencies to protect residents and staff of RCFs in the context of COVID-19.





The background of the entire page is a deep magenta color. It is populated with several large, detailed, and some blurred images of virus-like particles. These particles are roughly spherical with a textured, greyish-purple surface and are covered in numerous small, red, protruding spikes or glycoproteins. Some particles also show small yellow or green spots. The particles are scattered across the frame, with some in sharp focus and others blurred to create a sense of depth.

Published by the Health Information and Quality Authority (HIQA).

For further information please contact:

Health Information and Quality Authority
George's Court
George's Lane
Smithfield
Dublin 7
D07 E98Y

Phone: +353 (0) 1 814 7400
info@hiqa.ie
www.hiqa.ie

© Health Information and Quality Authority 2021