



**Health  
Information  
and Quality  
Authority**

An tÚdarás Um Fhaisnéis  
agus Cáilíocht Sláinte

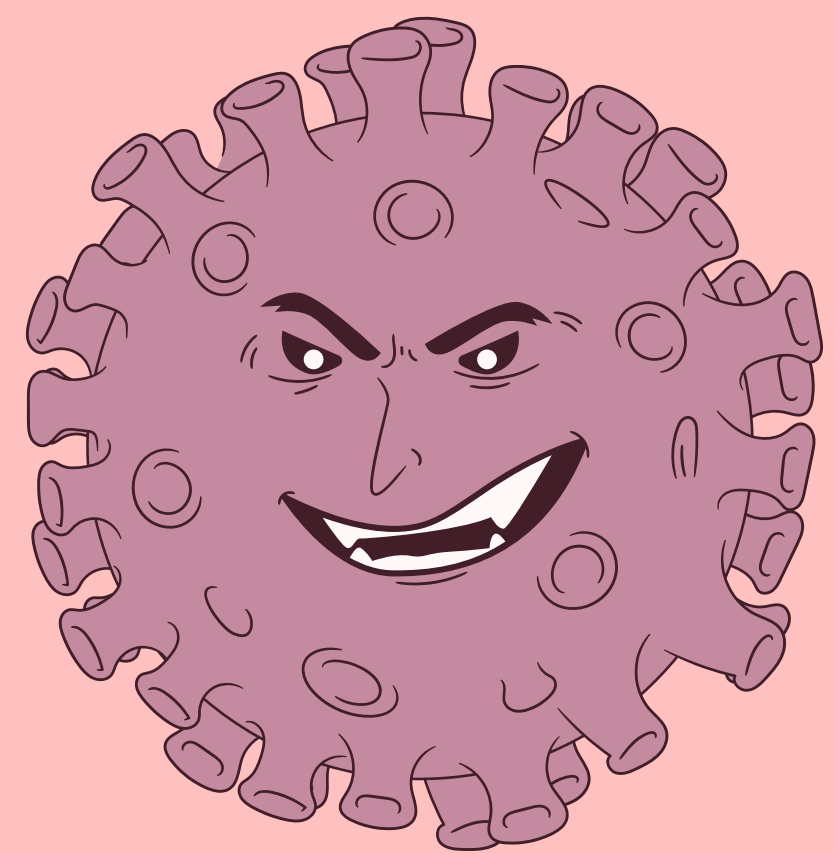
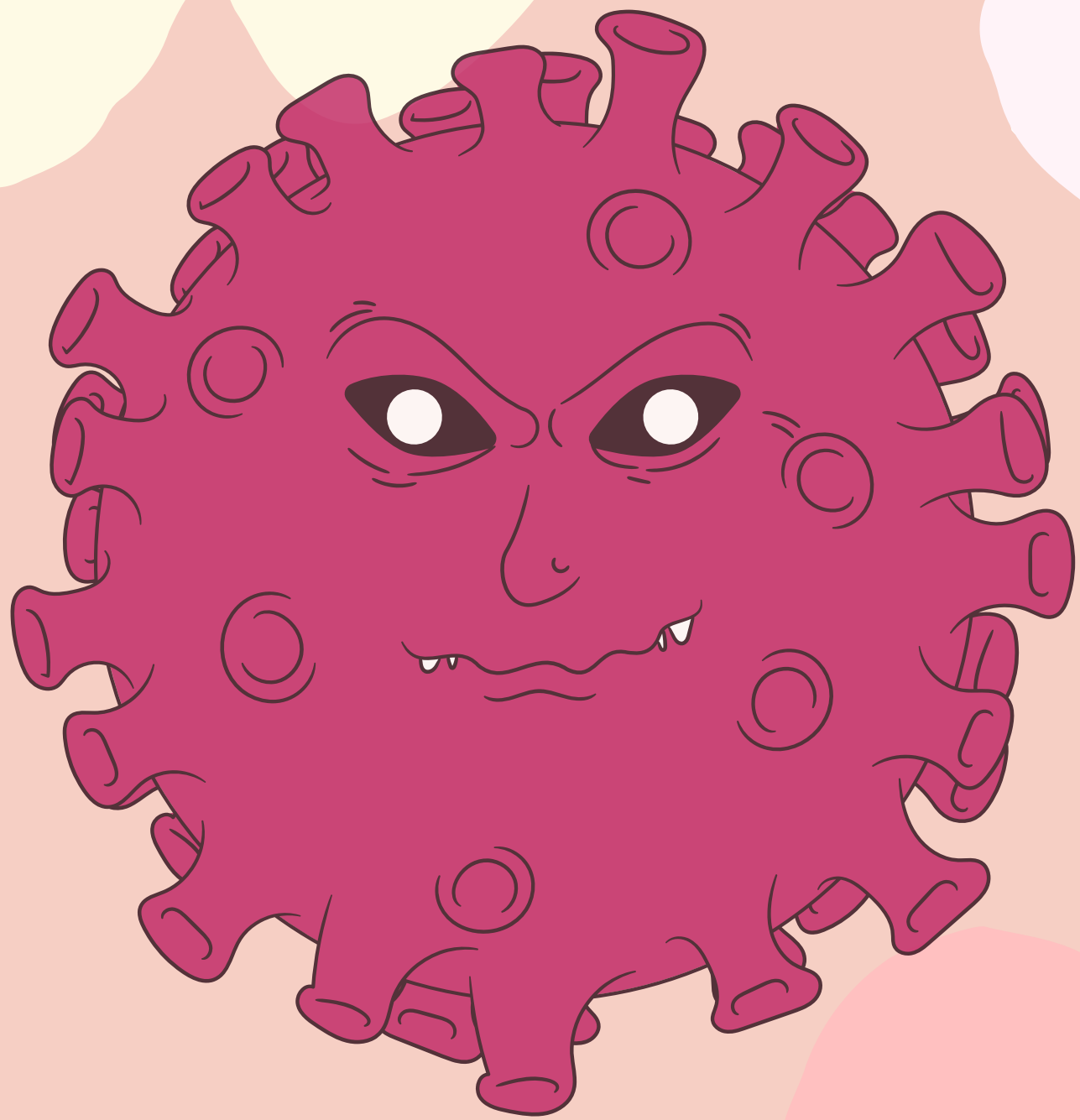
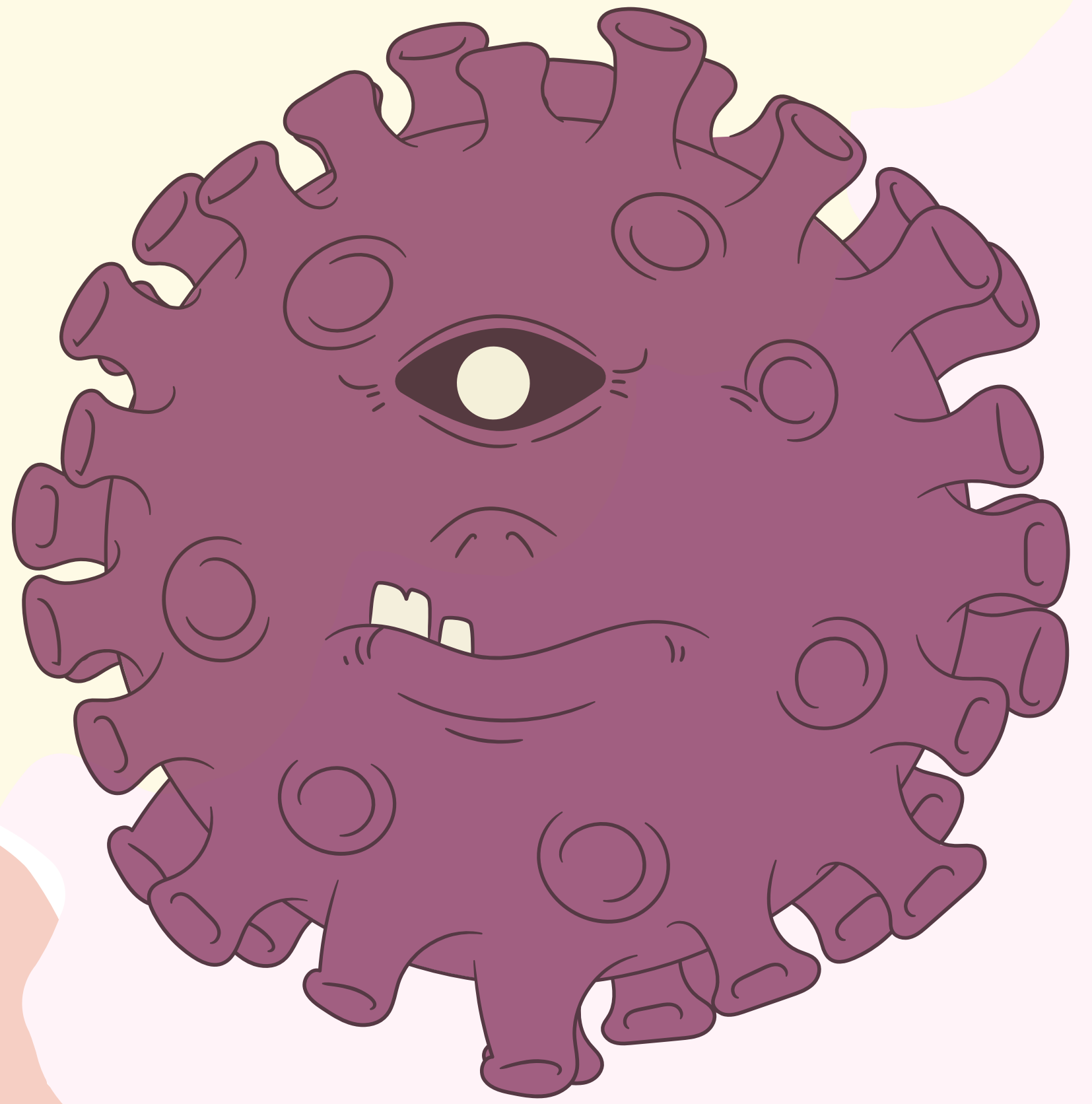


A ROUND UP OF OUR  
**REPORTS,  
REVIEWS AND  
ADVICE**

---

Submitted to support the National Public Health  
Emergency Team to inform its work in July 2021









# Limit the spread

---

## **We updated our international review of public health measures and strategies to limit the spread of COVID-19.**

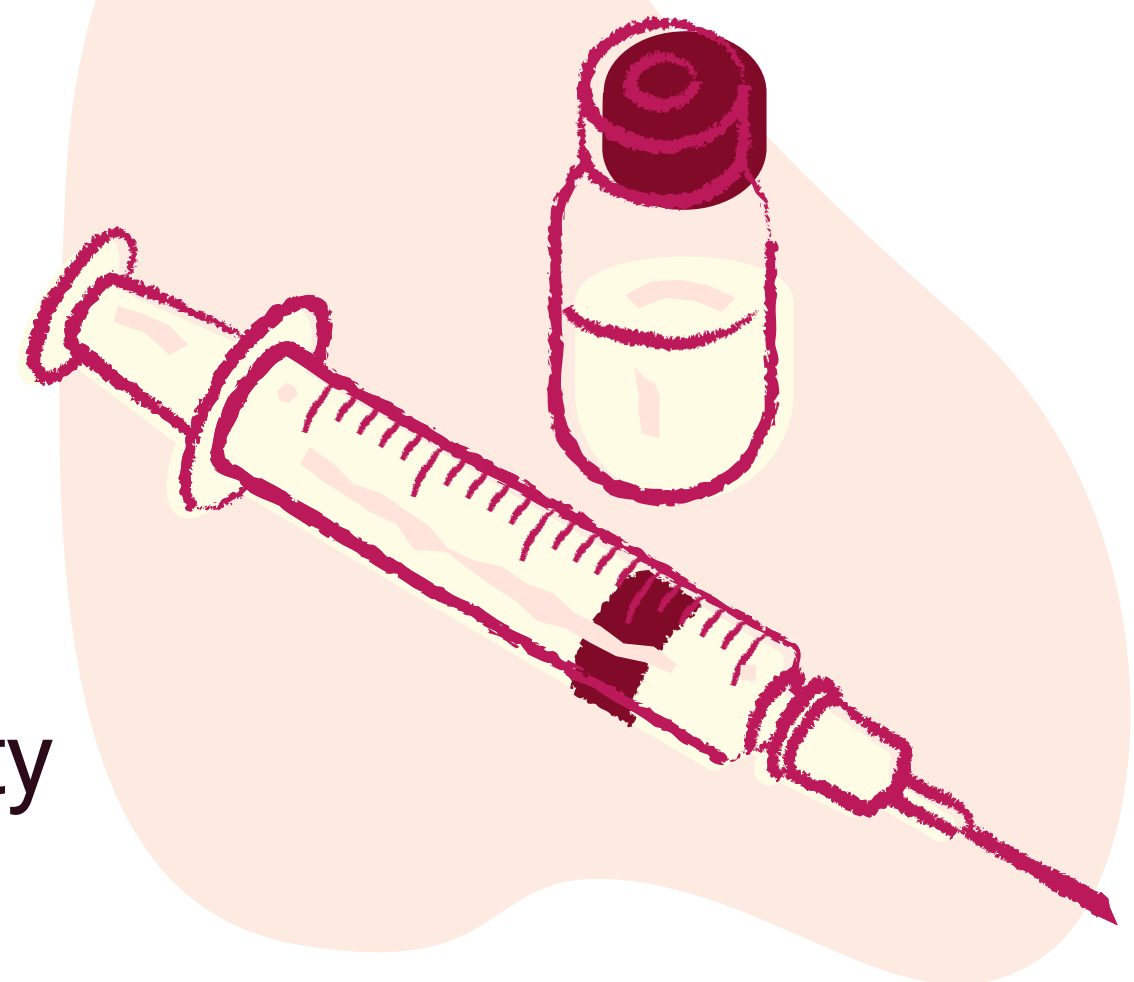
We found that across 18 of the 19 countries included in the review, restrictions were easing. The exception was Portugal, where regional COVID-19 restrictions were being reintroduced. The pace of easing was noted to differ, as did the requirements to access certain services, facilities and to attend events.

*"We need to remain cautious. While our rate of hospitalisations and ICU admissions is low, incidence rates are rising, which suggests an increase in hospitalisations may be ahead of us."*

**Dr Máirín Ryan**, Deputy CEO and Director of Health Technology Assessment

## **We advised...**

The COVID-19 vaccine remains the best method to limit the spread of SARS-CoV-2 and safeguard against serious illness. We encourage anyone who has the opportunity to be vaccinated, to do so.





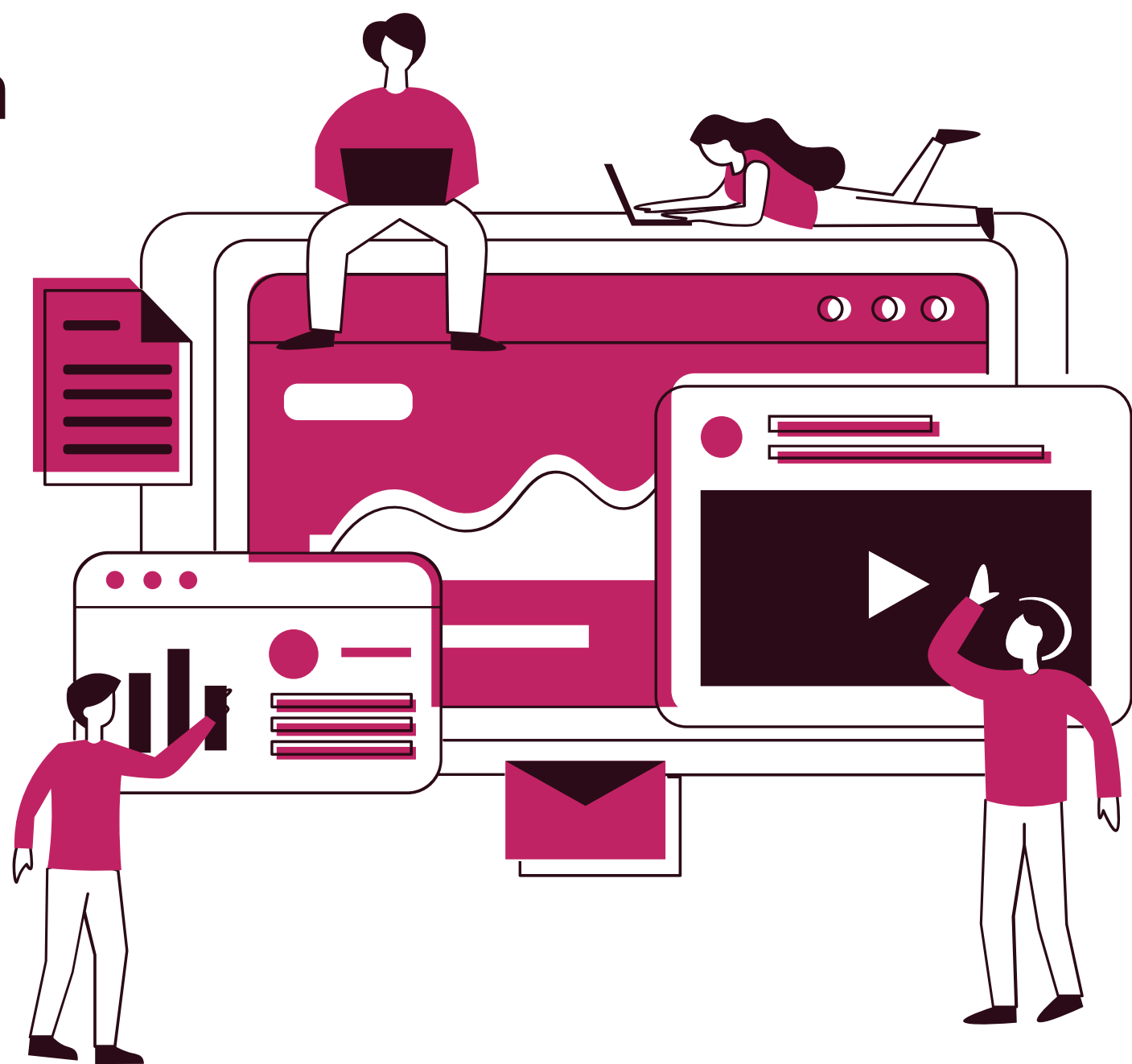


# DA COVID-19 DATABASE

Once a week we update our database of public health guidance on COVID-19 to include latest guidance from governments, public health organisations and NGOs.

The database is mostly used by relevant stakeholders in the Health Protection Surveillance Centre, the National Public Health Emergency Team, the Department of Health, and Health Service Executive.

However, it is accessible and available on our website for everyone and if you are interested in finding out more about how other countries are reacting to COVID-19, we encourage you to use it.





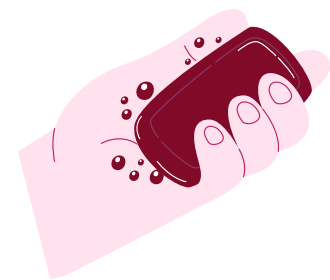
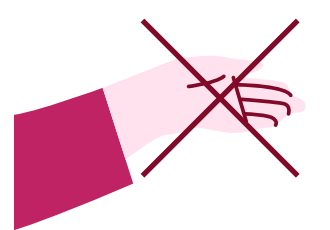


# PROTECTIVE MEASURES FOR VULNERABLE GROUPS

We updated our review of public health guidance issued to protect vulnerable groups who may be at risk of severe COVID-19 twice in July.

**Our review summarises the variety of protective measures being taken to protect vulnerable groups who are at high risk of severe illness from COVID-19 across 14 countries.**

Advice for vulnerable groups typically includes stay at home, practice hand hygiene, physical distancing and avoid contact with others.



Our July updates included advice from Denmark and Finland in relation to the quarantining as a close contact and newly updated advice from England, Scotland, Switzerland and US

**We have updated this report**

52

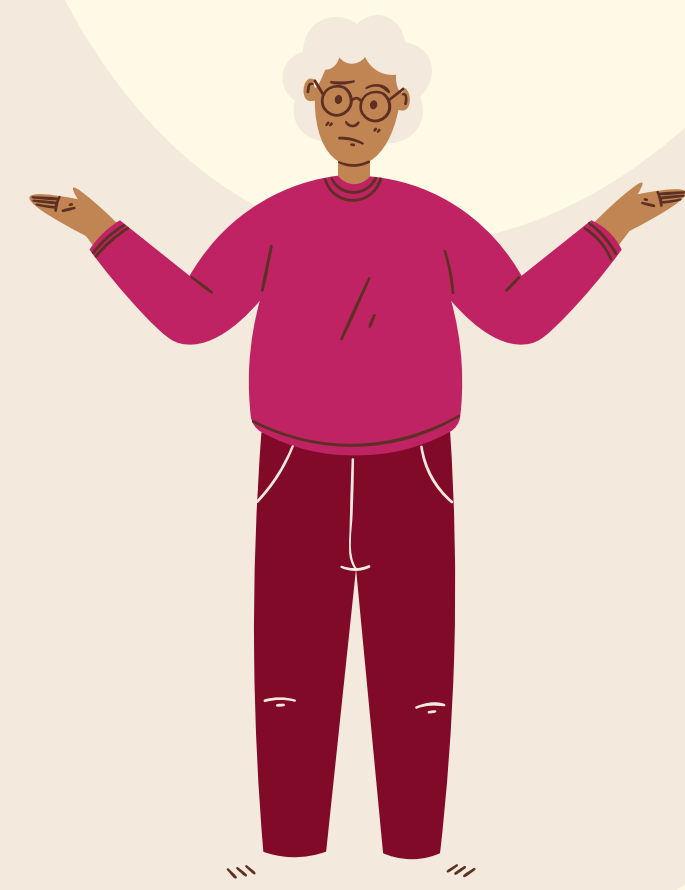
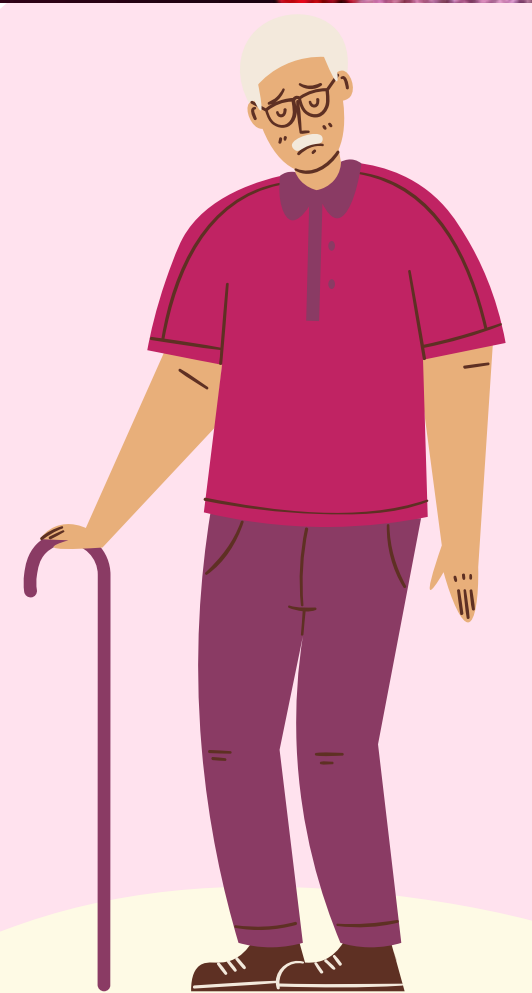
**times**

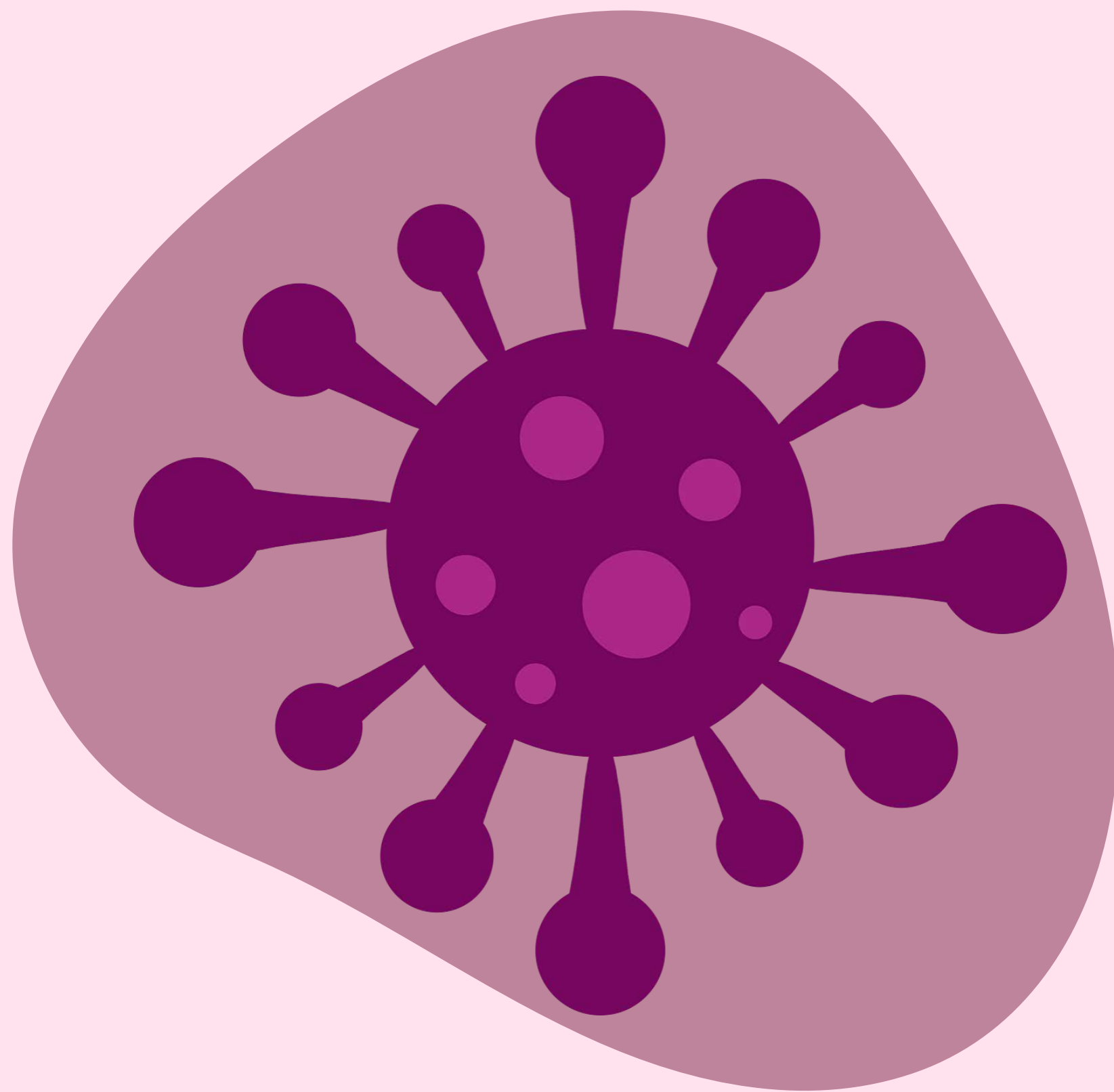


# Guidance for residential care facilities

Our latest rapid review of guidance for residential care facilities in the context of COVID-19 included a summary of additional guidance for residential care settings in England, Northern Ireland and New South Wales. Guidance from the Communicable Diseases Network Australia was also included.

**Residential care facilities (RCFs) in Ireland and across the world have been affected by outbreaks of COVID-19. Our rapid review summarises the guidance issued by national and international agencies to protect residents and staff of RCFs in the context of COVID-19.**







A microscopic image showing several cells with a textured, granular surface. The cells are primarily purple and pink, with numerous small, bright red and yellow spots scattered across their surfaces. The background is a dark, reddish-purple color.

Published by the Health Information and Quality Authority (HIQA).

For further information please contact:

Health Information and Quality Authority  
George's Court  
George's Lane  
Smithfield  
Dublin 7  
D07 E98Y

Phone: +353 (0) 1 814 7400  
[info@hiqa.ie](mailto:info@hiqa.ie)  
[www.hiqa.ie](http://www.hiqa.ie)

© Health Information and Quality Authority 2021