



**Health  
Information  
and Quality  
Authority**

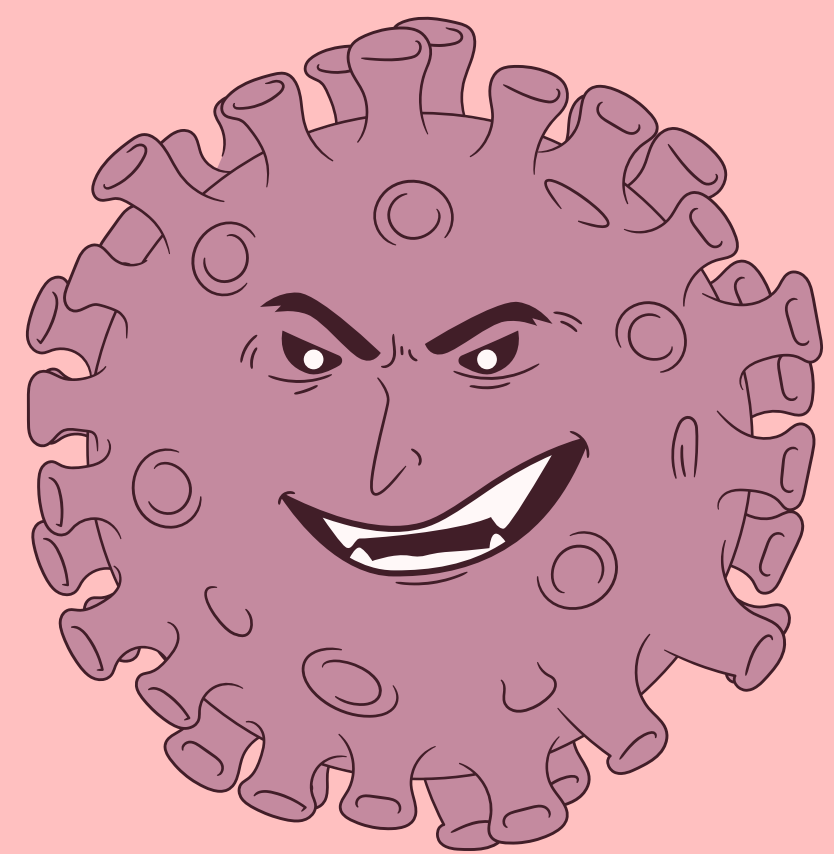
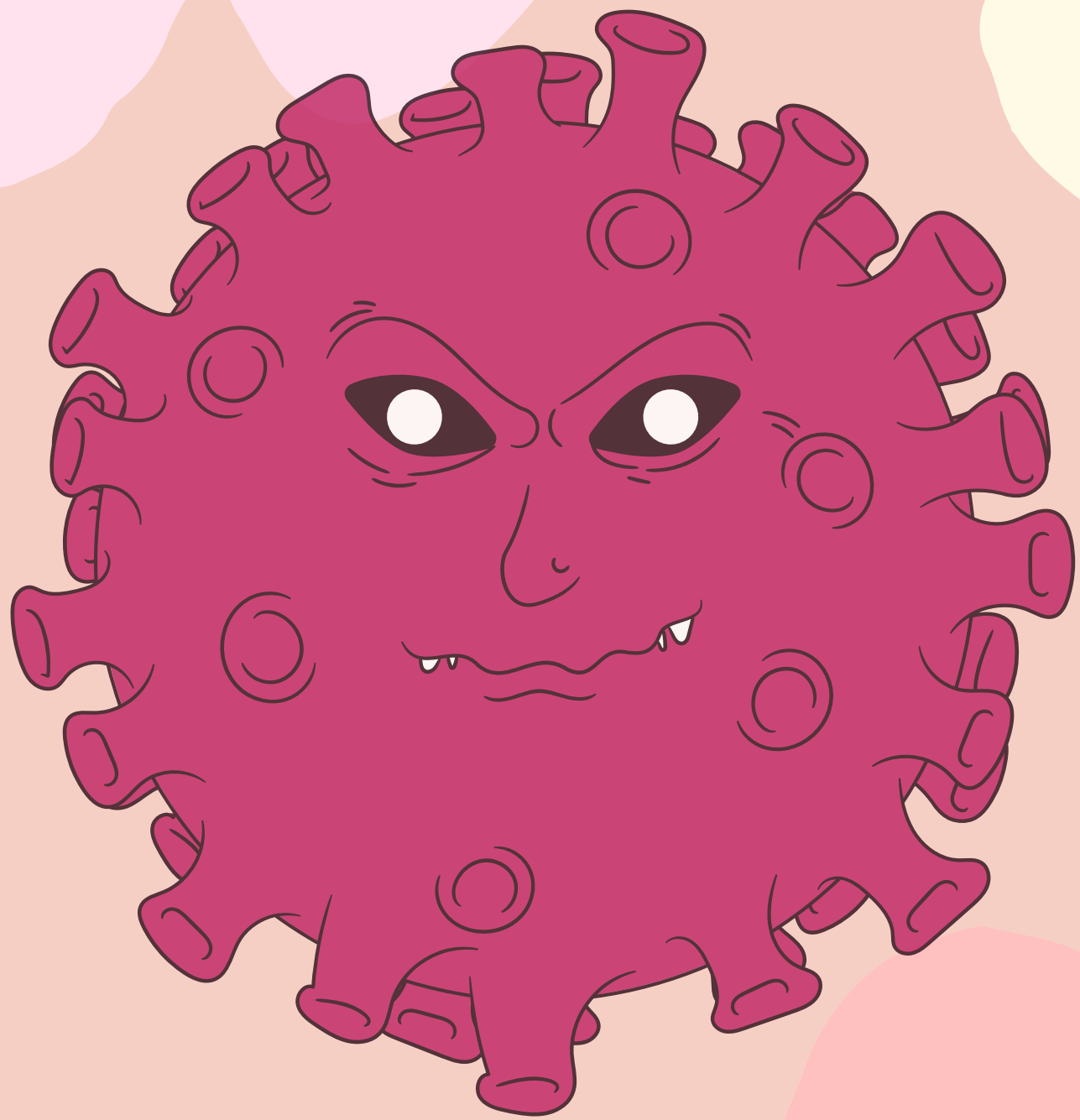
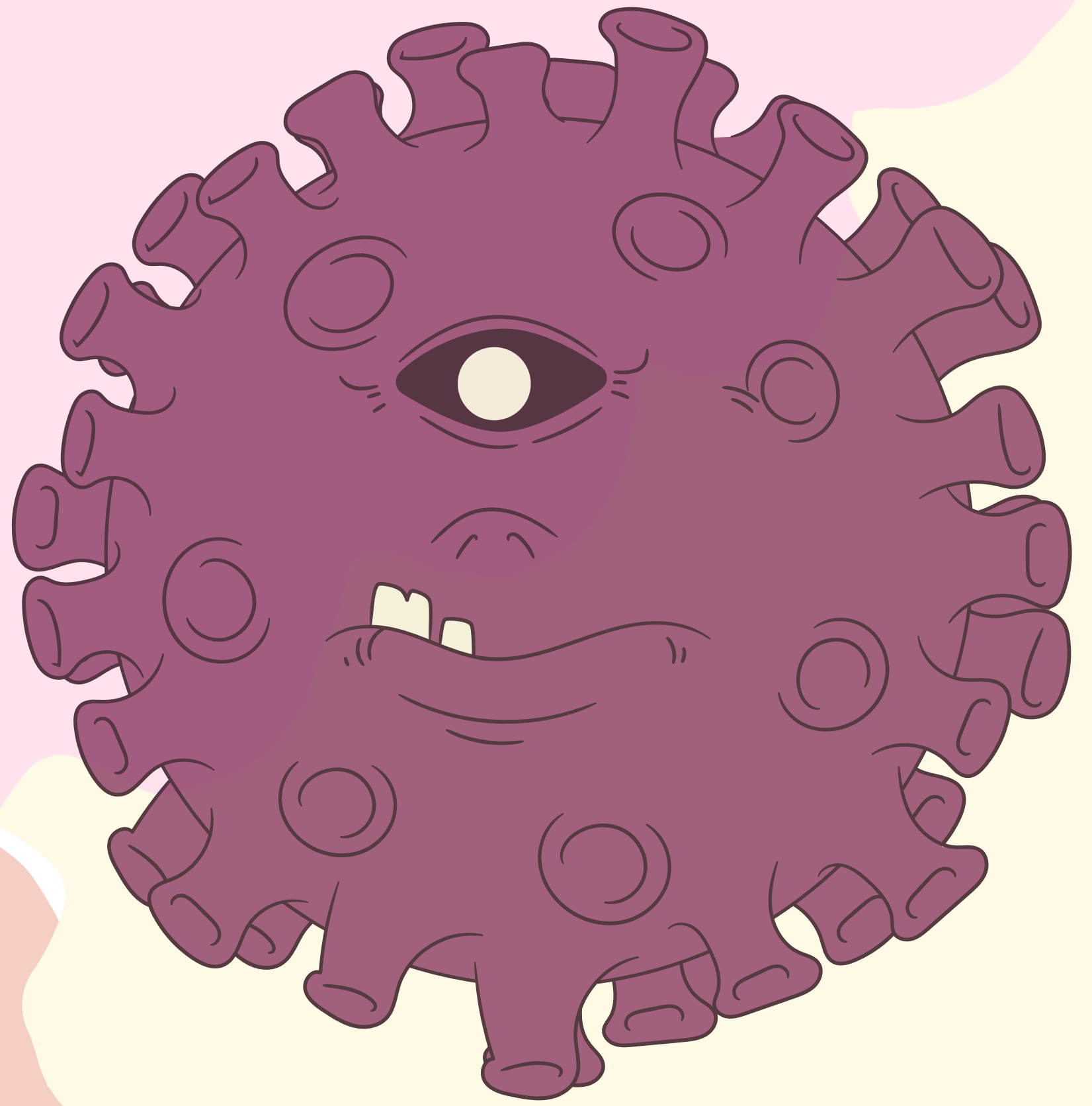
An tÚdarás Um Fhaisnéis  
agus Cáilíocht Sláinte



A ROUND UP OF OUR  
**REPORTS,  
REVIEWS AND  
ADVICE**

---

Submitted to support the National Public Health  
Emergency Team to inform its work in August 2021



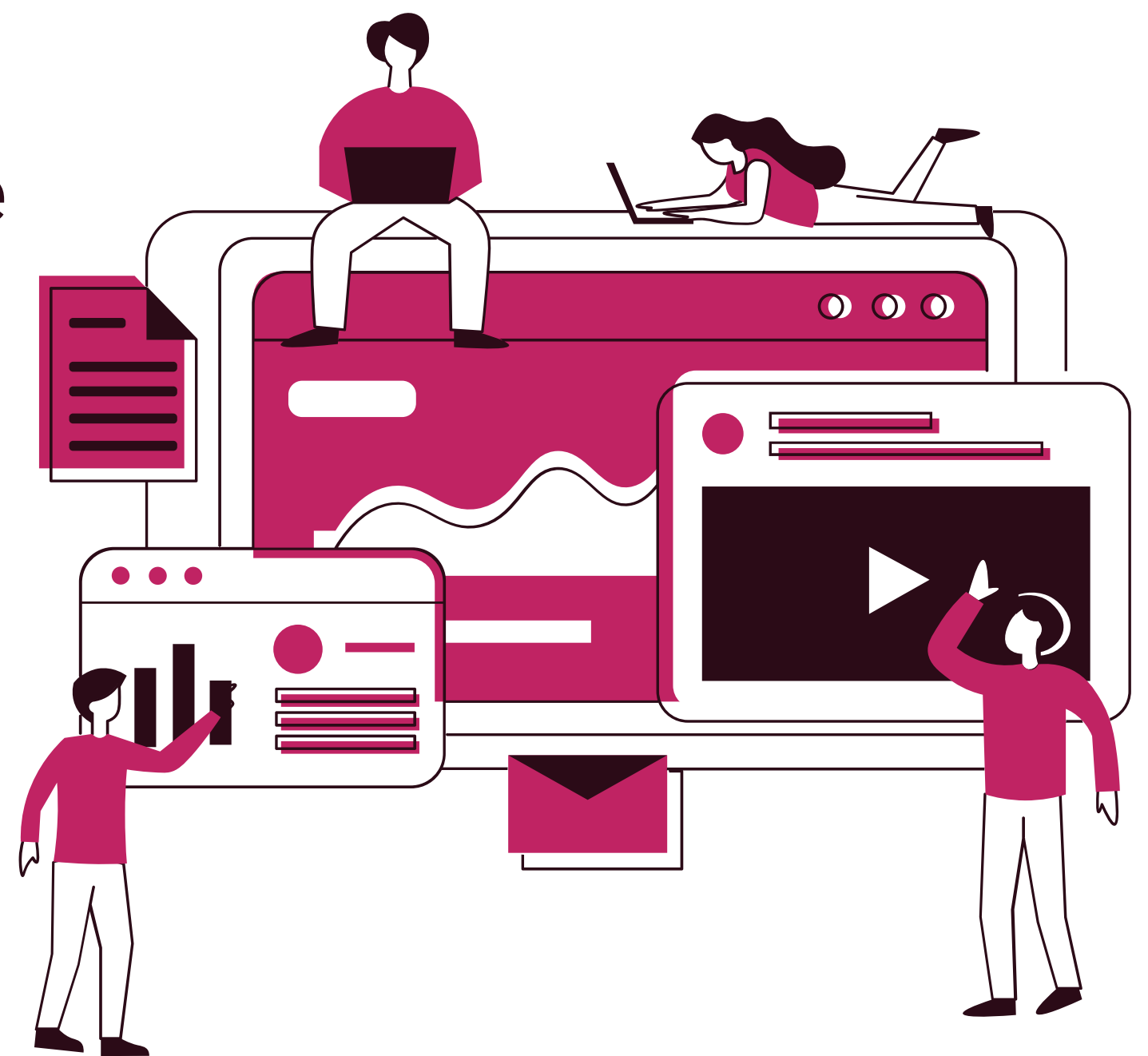


# DATA COVID-19 DATABASE

Once a week we update our database of public health guidance on COVID-19 to include latest guidance from governments, public health organisations and NGOs.

The database is used by relevant stakeholders in the Health Protection Surveillance Centre, the National Public Health Emergency Team, the Department of Health, and Health Service Executive.

However, it is accessible and available on our website for everyone and if you are interested in finding out more about how other countries are reacting to COVID-19, we encourage you to use it.



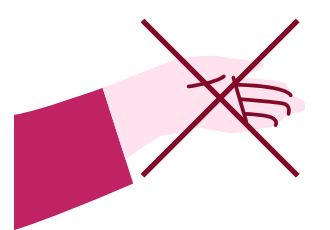


# PROTECTIVE MEASURES FOR VULNERABLE GROUPS

We updated our review of public health guidance issued to protect vulnerable groups who may be at risk of severe COVID-19 once in August.

**Our review summarises the variety of protective measures being taken to protect vulnerable groups who are at high risk of severe illness from COVID-19 across 14 countries.**

Advice for vulnerable groups typically includes getting vaccinated, practicing hand hygiene, physical distancing and wearing face masks.



Our latest report included updated advice from Scotland, England and the United States.

**We have updated this report**

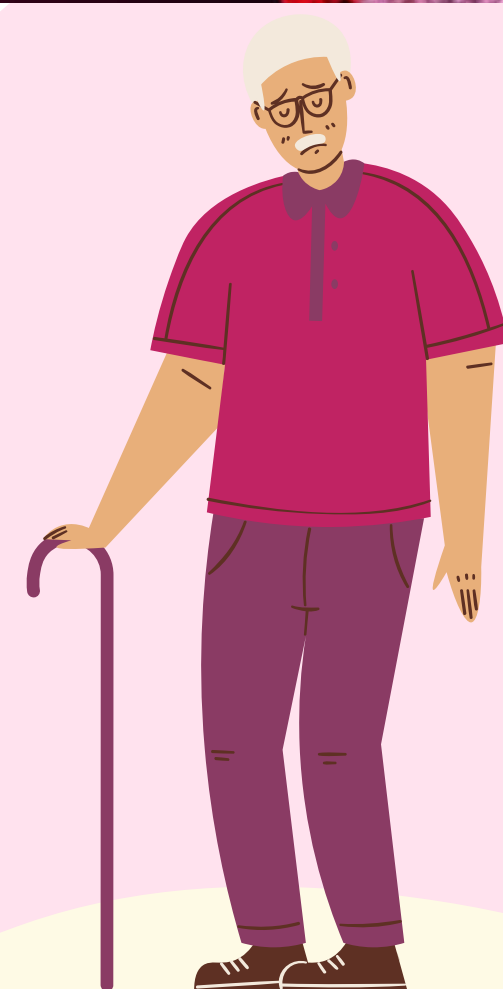
53

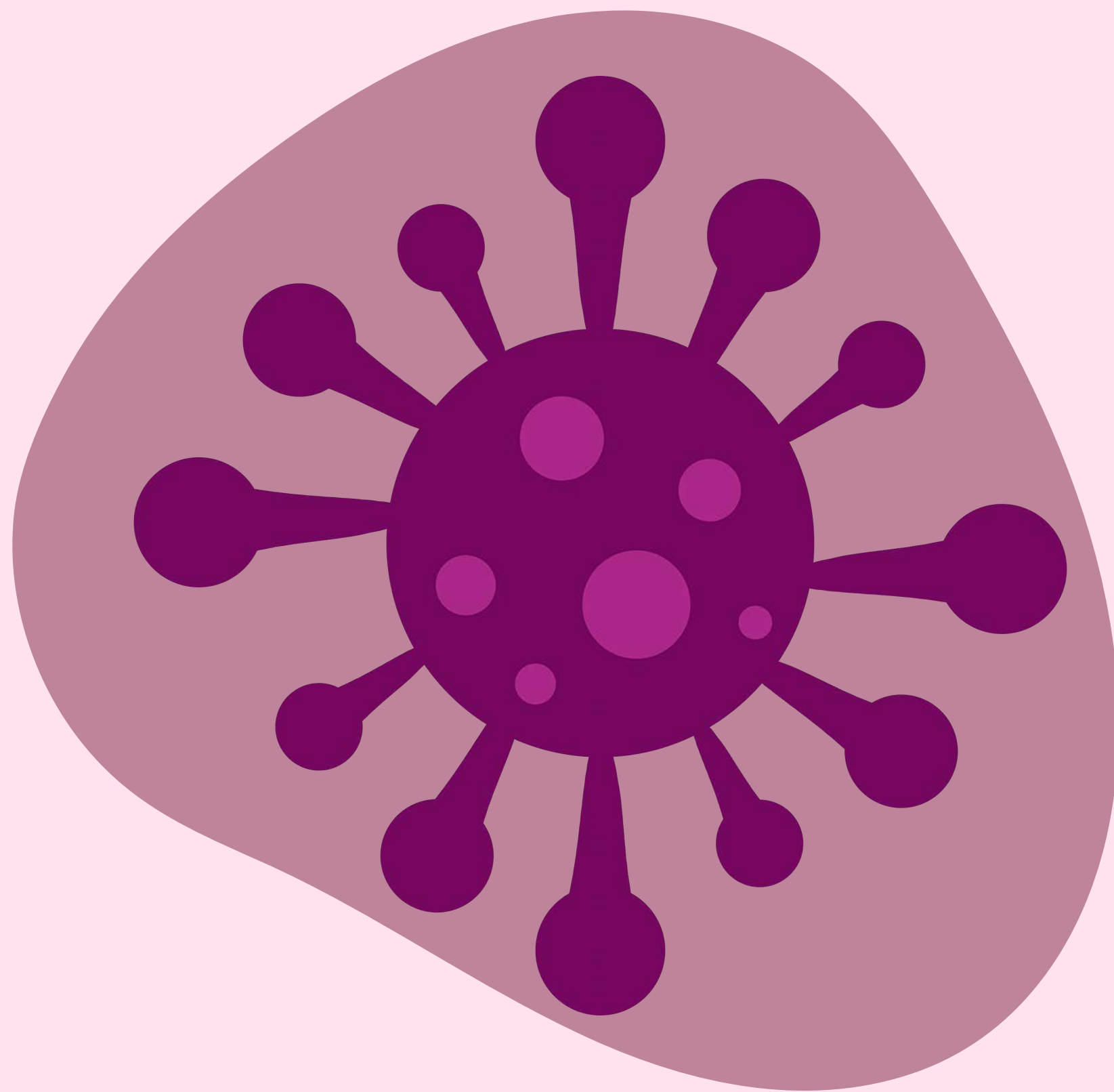
**times**

# Guidance for residential care facilities

Our latest rapid review of guidance for residential care facilities (RCFs) in the context of COVID-19 included a summary of updated guidance for residential care settings in New South Wales, British Columbia and Prince Edward Island, Canada. As well as updated guidance from COTA Australia which supports the mandating of COVID-19 vaccination for workers in RCFs.

**Residential care facilities in Ireland and across the world have been affected by outbreaks of COVID-19. Our rapid review summarises the guidance issued by national and international agencies to protect residents and staff of RCFs in the context of COVID-19.**







Published by the Health Information and Quality Authority (HIQA).

For further information please contact:

Health Information and Quality Authority  
George's Court  
George's Lane  
Smithfield  
Dublin 7  
D07 E98Y

Phone: +353 (0) 1 814 7400  
[info@hiqa.ie](mailto:info@hiqa.ie)  
[www.hiqa.ie](http://www.hiqa.ie)

© Health Information and Quality Authority 2021