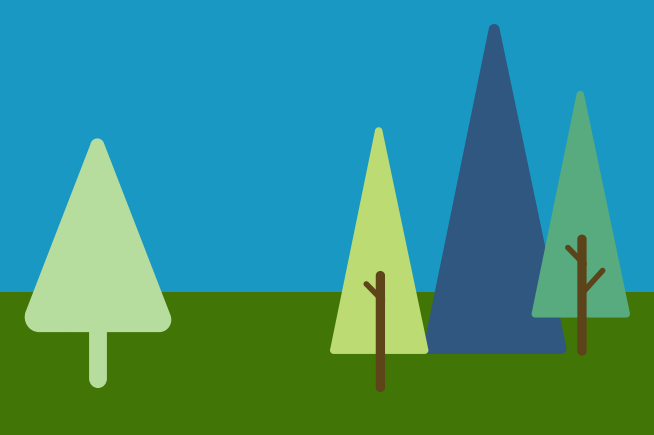
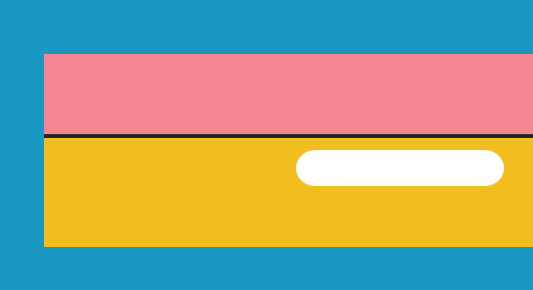
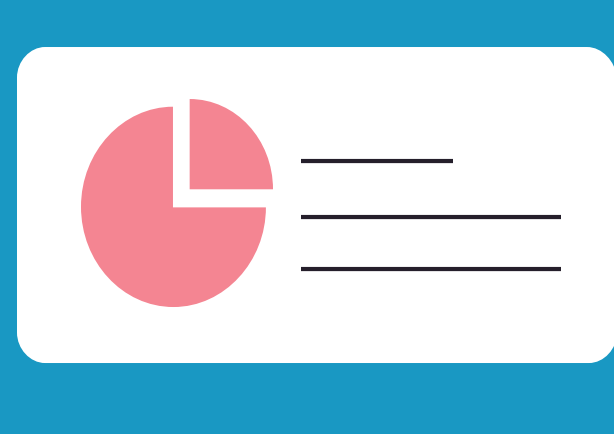
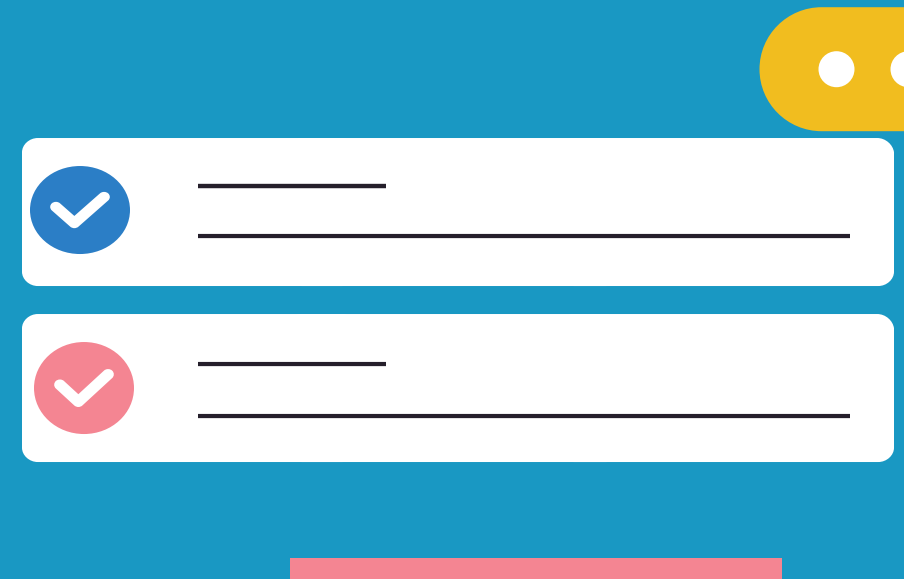
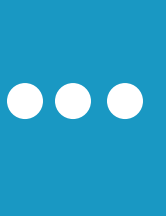


Regulation of Disability Services



Number of centres



• 61 additional centres in 2021 • 27 less residential places



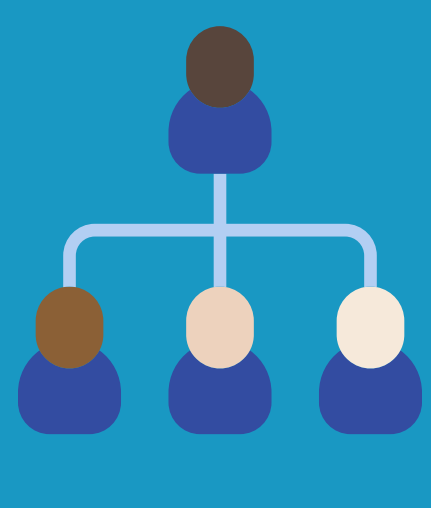
Inspections

69%
announced inspections



31%
unannounced inspections

Inspections show that a provider's governance, oversight and leadership arrangements directly impact and influence the overall quality of a service.



Congregated Settings



201

centres with residents living in congregated settings*

2,419

residential places

*Congregated settings are centres where more than 10 people live in the same building or in a group of buildings which are located together on campus.



Congregated Settings

- Centres in congregated settings had higher levels of non-compliance than centres based in the community.
- In 2021, more congregated settings required improvements to the overall quality and safety of the premises.



Governance and Management

- One in five inspections found improvements were required to the provider's governance and management arrangements.



Infection prevention and control (IPC)

- In 2020, IPC was reviewed in 72% percent of inspections, compared to 95% in 2021.
- Compliance levels decreased when compared with 2020.

