

NATIONAL ENGAGEMENT ON Digital Health & Social Care

In partnership with the Department of Health and the Health Service Executive.

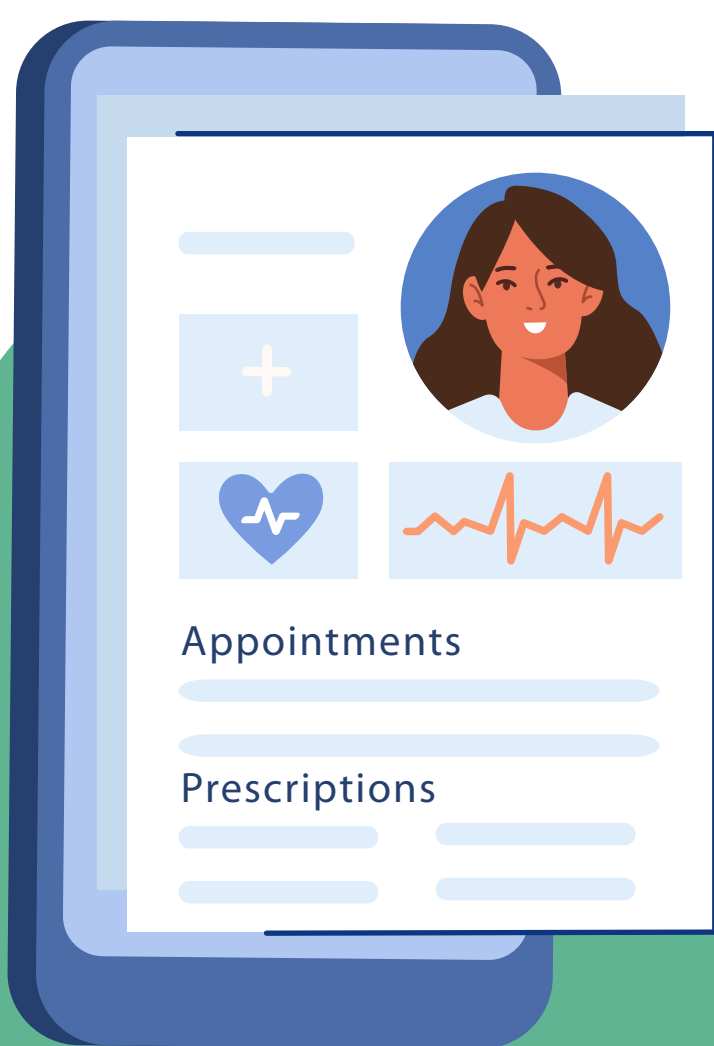
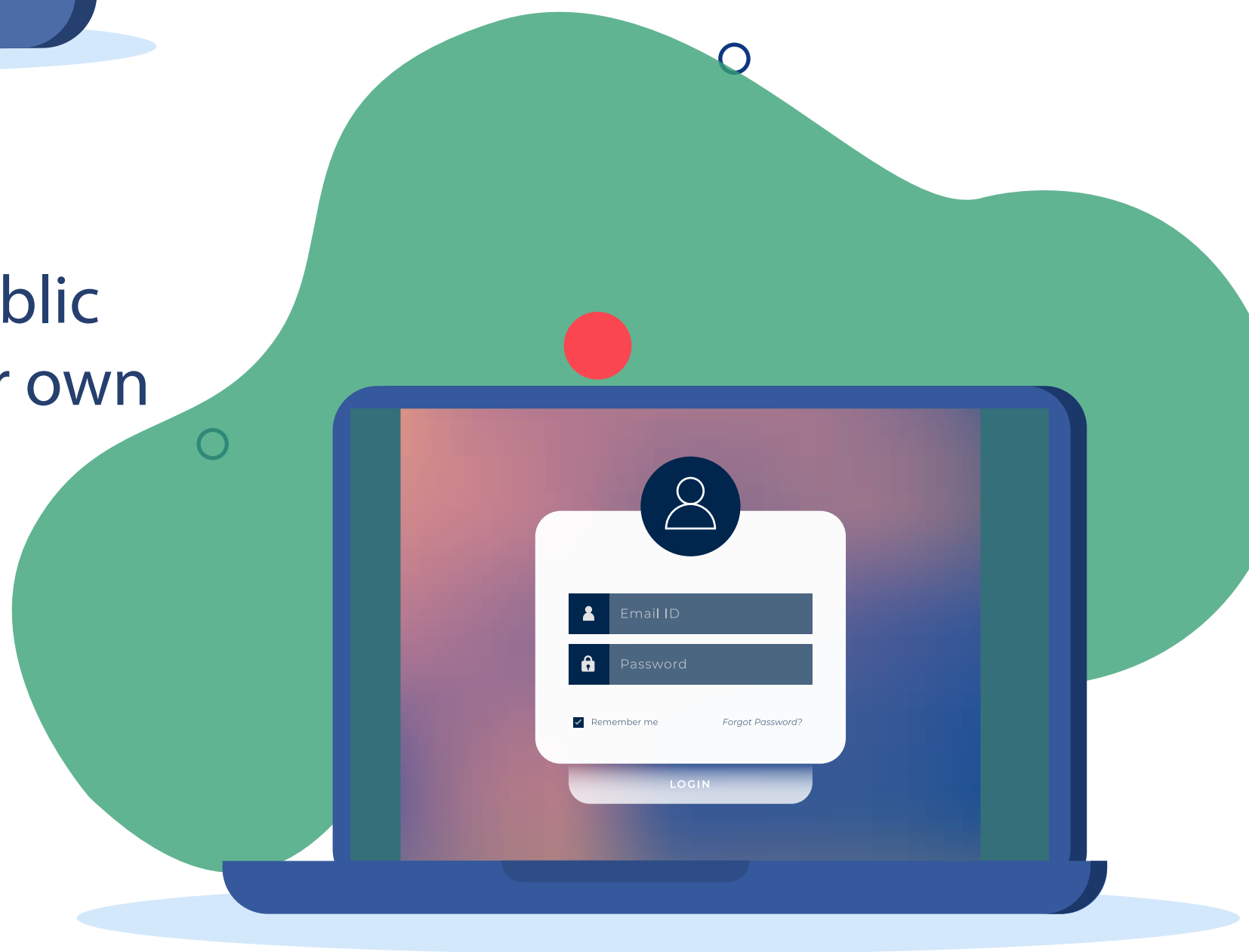
We want to hear the views of professionals in health and social care.



Professionals from dentistry, medicine, midwifery, nursing, pharmacy, pre-hospital emergency care, psychology, or CORU are invited to complete the online survey.



What do you think of the public having digital access to their own health and social care information?



We also want to know what you think of using digital tools in health and social care to communicate with and provide care to people.

Please complete the **15-minute** online survey.